

Expression Optimizing and Purification of Recombinant Human Leukemia Inhibitory Factor Produced in *E. coli* Strain BL21

Houman Kahroba,¹ Hamid Galehdari,^{*1} Mohammolad Shafeei,¹ Saeed Reza Khatami,¹ Ali Khodadadi²

1. Department of Genetics, Shahid Chamran University, Ahvaz, Iran

2. Cancer, Petroleum and Environmental Pollutants Research Center, Jundishapur University of Medical Sciences, Ahvaz, Iran

Article information	Abstract
<p>Article history: Received: 30 July 2013 Accepted: 19 Oct 2013 Available online: 29 Jan 2014 ZJRMS 2015 Feb; 17(2): 47-51</p> <p>Keywords: Recombinant human leukemia inhibitory factor <i>E. coli</i> Gene expression Recombinant protein purification</p> <p>*Corresponding author at: Department of Genetics, Shahid Chamran University, Ahvaz, Iran. E-mail: Galehdari187@yahoo.com</p>	<p>Background: Leukemia inhibitory factor (LIF) is a glycoprotein, categorized as a subfamily of interleukin 6 cytokines which is known in many mammals. A pluripotent cytokine with a wide biological function range has numerous effects on target cells. The LIF regulates neuron survival, hematopoiesis and seen in LIF^{-/-} knockout mice affects blastocyst implantation, also acts as pre-inflammatory cytokine, and regulates immune response. Further, it is able to maintain stem cells poly potency. The main object of present work was expression, optimizing, and purification of recombinant human leukemia inhibitory factor (rhLIF).</p> <p>Materials and Methods: In this experimental study, Pet28 (+) carrying the LIF gene and kanamycin resistance marker was cloned in <i>E. coli</i> strain BL21. The induction was optimized by altering 3 factors including the temperature, the induction time, and the concentration of the Isopropyl β-D-1-thiogalactopyranoside (IPTG) as inducer. The purification of the recombinant human LIF (rhLIF) was done by single step affinity chromatography. After the purification, method accuracy was proved by Sodium dodecyl sulfate (SDS) -PAGE electrophoresis and Western blotting.</p> <p>Results: Optimizing of the expression was reached by changing various parameters, and purification has been done successful.</p> <p>Conclusion: rhLIF undergoes modification by glycosylation to get its full functionality. The produced rhLIF in prokaryotic host in this work is lacking of glycosylation. However, its proper function should be evaluated in further studies.</p>

Copyright © 2015 Zahedan University of Medical Sciences. All rights reserved.

Introduction

Leukemia inhibitory factor (LIF) is a glycoprotein, categorized as a subfamily of interleukin 6 cytokines with a wide biological function range, and numerous effects on target cells [1]. The human life gene is located on chromosome 22q12.2 containing 3 exons. This gene produces a 3935bp long transcript that codes for a protein with 202 amino acids [2]. The LIF protein in mammals is highly basic and has heterogeneous weight range, because of different glycosylation pattern. LIF firstly was isolated from fibroblasts and is characterized by its ability to induce differentiation of mouse myeloid leukemic M1 cells into macrophages [3]. The IL-6 subfamily cytokines, with a wide range of physiological functions in diverse fields, such as inflammation, immune responses, and cell survival including LIF, IL-6, IL-11, ciliary neurotrophic factor (CNTF), cardiotrophin-1 (CT-1), oncostatin M (OSM), and cardiotrophin-1 [4]. LIF has been shown to retard progression of motor neuron disease in a murine model of this disorder [5]. The action of LIF on nerve cells has also been examined in animal models. Direct application of LIF to sites of nerve transection improved survival of both sensory and motor neurons and LIF regulates neuron survival [6]. Nerve transection has been shown to increase expression of LIF and IL-6, and is

associated with retrograde axonal transport of LIF [7]. In LIF^{-/-} knockout mice have been seen that regulates blastocyst implantation and also acts as pre-inflammatory cytokine that regulates immune response [8]. These cytokines have some overlapping biological activities acting through receptors that share a common signaling molecule; the glycoprotein 130 (gp130) subunit [9]. The receptor for LIF protein is a heteromeric complex consisting of gp130 (also named LIFR α) and the LIF receptor (LIFR, also referred as to LIFR β) [10]. The human LIF has some other known functions like induction of acute phase proteins [11, 12] and is important in the embryo development [13-15]. In previous study, cloning and initial expression of recombinant human leukemia inhibitory factor by pET-28a (+) was successfully done in *E. coli* strain BL21 [16]. The LIF gene accompanied with his-tag sequence in carboxyl end serves as a signal for easy and one step purification. The rhLIF was expressed and proved by SDS PAGE and Western blotting. In present research we optimized inducer concentration, inducing temperature and inducing time to reach highest amount of soluble recombinant protein to prevent inclusion body formation. Although purified rhLIF and proved its purification by SDS PAGE and Western blotting.

Materials and Methods

Bacteria culture and inducing by isopropyl β -D-1-thiogalactopyranoside (IPTG): In this experimental study, for bacteria culture every time we added 4 μ L of bacteria permanent culture including pET28 (+) to 10 mL of Luria broth (LB) culture including kanamycin (final concentration of 30 μ g/mL, pET 28(+) includes resistance gene for kanamycin) and incubated for overnight in shaker incubator in 37°C for 12-14 h in 150 rpm. After this time 8 μ L of this medium added to 500 mL fresh culture with 30 μ L/mL kanamycin and incubate in 37°C and 150 rpm until reach OD₆₀₀: 0.8 (approximately 3 hours). During incubation OD₆₀₀ checked by spectrophotometer. After reaching desired OD₆₀₀ cultures induced by 2 concentration of inducer including 0.2 mmol and 0.4 mmol and then incubated in 25, 30 and 37°C in 150 rpm for 3, 4, 5, 6 and 7 h. We used auto induction medium includes lactose for comparing culturing results. Lactose is weaker inducer in contrast to IPTG for T₇ promoter; auto induction medium includes lactose as inducer which will omit some steps such as OD₆₀₀ measuring and addition of IPTG therefore the possibility of contamination by aero cells will reduce. In auto induction medium 1st source of energy for bacteria is glucose and second is glycerol and the last one is lactose which makes bacteria to run T₇ promoter. Auto induction medium includes 6 g Na₂HPO₄, 3 g KH₂PO₄, 20 g tryptone, 5 g yeast extract, 5 g NaCl which should be autoclaved and 60% glycerol, 10% glucose and 8% lactose should be filtered first by 0.22 μ and then be added.

Final concentration of kanamycin should be at least 100 μ g/mL, because excess phosphate causes kanamycin resistance [17].

Enzymatic and mechanical lysis of bacteria: Induced cells were collected by 4000 \times g, centrifuge for 15 min. Before sonication of cells we added 5-10 mL of binding buffer (20 mmolol sodium phosphate, 500 mmolol NaCl, 20 mmol imidazole, pH=7.4) for each gram of cell paste. Dissolved cell paste in binding buffer and added enzymatic agents to start enzymatic digestion including 0.2 mg/mL lysozyme, 1 mmol MgCl₂, 1 mmol PMSF (final concentrations). Stirred for 30 min at room temperature on rocker in 40 rpm [18].

After stirring samples transferred on ice and sonicated for 4-6 times in maximum pulse, each time for 30 seconds. We run sonication until samples lose their viscosity and get transparent. Finally samples transferred to micro tubes and centrifuged in 14000 rpm for 10 min and discard cell paste and transferred supernatant into chromatography column.

Chromatography: Chromatography done according to factory instruction, briefly at first the column was equilibrated with 10 mL binding buffer then samples were added and washed with 10 mL binding buffer, applied 3 mL elution buffer (20 mmol sodium phosphate, 500 mmol NaCl, 500 mmol imidazole, pH=7.4) and collected the eluate, and used for further study.

Protein Expression Analysis: Expression of the hLIF was evaluated by SDS-PAGE at first, after assuring of expression, proceed to purification. We used SDS PAGE in twice: 1- before purification 2- after purification. The prepared samples and protein molecular weight marker (Fermentas) was heated at 90°C for 5 min. Afterward each sample and marker was loaded on the 12% SDS-PAGE gel and run on the constant voltage of 120 V for 1 h. In second stage we took more samples for running on SDS PAGE gel, because measured concentration of purified rhLIF by spectrophotometer at 280 nM indicated low level of recombinant protein (80 uL sample+16 uL sample buffer). The gel was stained with Coomassie brilliant blue R-250 (Sigma) for 2 h and destained with the solution containing 450 mL methanol, 100 mL acetic acid (Merck) and H₂O for first stage but for second stage we used some more sensitive methods to staining the gel. Silver staining and colloidal Coomasi brilliant blue R-250 were used, these method even respond for low concentration of protein, sensitivity of these methods are 100-1000 ng/band. Following electrophoresis placed the gel in the colloidal coomassie staining solution (Mix 16 mL ortho-phosphoric acid in 768 mL of distilled water. Add 80 g of ammonium sulfate to this solution; prepare a solution of 5% CBB G250 in distilled water. Add 16 mL of this mixture to the solution prepared in step 1, immediately before use, slowly add 200 mL methanol to the solution to give a final concentration of 0.08% CBB G250/1.6% ortho-phosphoric acid/8% ammonium sulfate/20% methanol). Incubate the gel for 6 h to overnight in the staining solution. Then destained the gel with several changes of distilled water until the background is transparent, and silver staining was either. Fractionated proteins by SDS-PAGE from chromatography result, after assuring of protein band existing by Ponceau S staining and destaining, transferred to PVDF membrane (Millipore) by electro elution at 60 V for 3 h. The PVDF membrane was incubated overnight in blocking buffer [5% w/v skim milk (Merck) in 0.05% v/v PBS-Tween-20 solution] at 4°C, followed by washing 3 times with PBS-Tween-20 and shaking in 50 rpm for an hour in 1:200 dilution of mouse monoclonal LIF antibody (Santa Cruz biotechnology, Inc.), with repeating washing step 3 times with PBS-Tween 20. The membrane was then incubated with 1/2000 dilution of a goat anti-mouse IgG peroxidase conjugate (Sigma) and the signal was detected by 4-chloro-1-naphthol (Biogen, Iran) substrate solution [16].

Results

Bacteria culture and induction by IPTG: In contrast to previous study, conditions such as the temperature of 25°C and the induction in 0.4 mmol concentration for 3 h resulted in more robust soluble recombinant protein and therefore more concentration of rhLIF. In current study we tried to optimize all factors, to gain high concentration of purified recombinant protein. rhLIF expression checked by SDS PAGE electrophoresis in 0.2 mmol and 0.4 mmol concentration of IPTG in different induction times (Fig. 1).

Table 1. Spectrophotometer results in 280 nm absorption for purified rhLIF in elution buffer

Induction time	IPTG 0.4 mmol	3 h	4 h	5 h	6 h	7 h
rhLIF µg/mL	25°C	0.528	0.42	0.361	0.282	0.255
	30°C	0.24	0.2	0.2	0.156	0.115
	37°C	0.223	0.218	0.182	0.114	0.101
Induction time	IPTG 0.2 mmol	3 h	4 h	5 h	6 h	7 h
rhLIF µg/mL	25°C	0.192	0.171	0.186	0.18	0.145
	30°C	0.19	0.144	0.142	0.101	0.111
	37°C	0.175	0.161	0.148	0.15	0.092

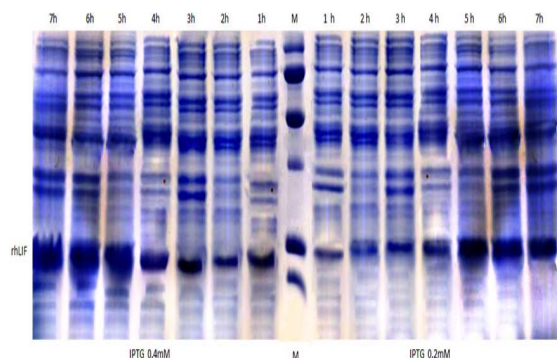


Figure 1. SDS PAGE results for expression of rhLIF by 0.2 and 0.4 in different times after induction smooth difference between bands is obvious

M: marker

Recombinant protein production by auto induction medium and LB medium in 25°C was significantly different, auto induction medium result was very low SDS PAGE proved it (Fig. 2).

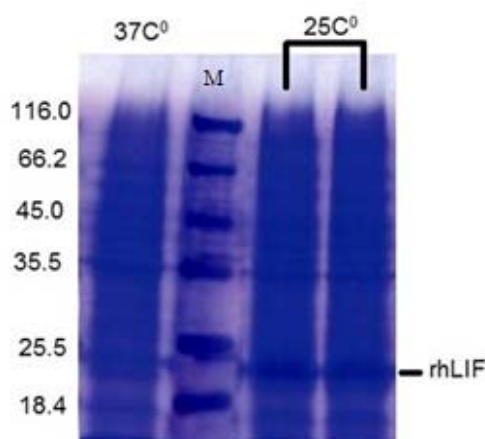
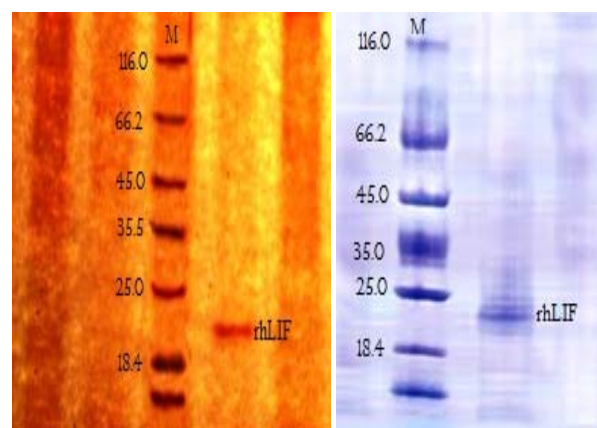


Figure 2. Difference between auto induction medium in 37°C and 25°C in LB medium

M: protein weight marker

IPTG concentration optimizing and protein purification results: After purification of recombinant protein by chromatography column for analyzing purification accuracy and quality, column result were measured by spectrophotometer at 280 nm and analyzed by SDS PAGE and Western blotting. Measuring results for spectrophotometer is shown in table 1. SDS PAGE gel staining result approved purification of rhLIF, gel staining was done by colloidal Coomasi blue and silver staining (Fig. 3). Western blotting proved accuracy of chromatography purification (Fig. 4).



A

B

Figure 3. Purified rhLIF induced by 0.4 mmol in 25°C. SDS PAGE gel stained by silver nitrate (A), stained by colloidal Coomassie blue (B) M: protein weight marker

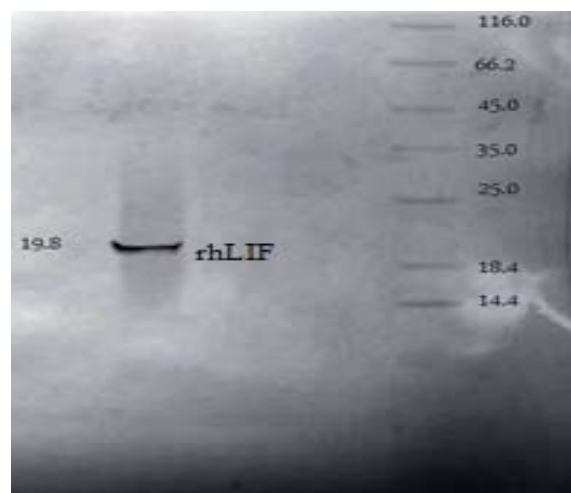


Figure 4. Western blotting result after purification of rhLIF by chromatography

Discussion

In current study we optimized expression rate of rhLIF for gaining maximum soluble protein for single step chromatography. Our optimization resulted in bacteria culture at 25°C and induced by 0.4 mmol of IPTG for 3 h which led to the best outcome. Then we successfully purified recombinant protein in single step purification by affinity chromatography and proved our procedure by SDS-PAGE and Western Blotting.

Leukemia inhibitory factor has remarkable biological and biotechnological role in stem cell culturing. Stem cell

increasing utilization in research and medical (cell therapy) makes LIF usage an important issue in economic aspect. According to various effect of this factor on human cell lines, high purity of LIF is notable point that should be considered.

Gough et al. firstly cloned murine leukemia-inhibitory factor (LIF) gene was isolated from a genomic library by using the murine cDNA. LIF gene was introduced into the yeast expression vector YEpsc 1. Yeast cells transformed with the resulting recombinant could be induced with galactose to produce high levels of a factor that induced the differentiation of murine M1 leukemic cells in a manner analogous to murine LIF [19]. Horiuchi et al. cloned chicken LIF in *E. coli* and studied its effect on maintaining chicken stem cell pluripotent manner maintaining [20]. Tomala et al. cloned LIF by attaching a marker called thioredoxin which leads to gain insoluble recombinant protein production in bacteria cell [21]. Imsoonthornruksa et al. cloned hLIFc DNA into 2 different vectors in order to produce N-terminal His 6-tag and Trx-His 6-tag hLIF fusion proteins in Origami (DE3) *E. coli*. The His 6-hLIF fusion protein was not as soluble as the Trx-His 6-hLIF fusion protein. One-step immobilized metal affinity chromatography (IMAC) was done to recover high purity (>95% pure) His 6-hLIF and Trx-His 6-hLIF fusion proteins [18]. Cui and Selwood cloned LIF in brushtail possum which is an eukaryotic host and studied this factor effect in pregnancy maintaining [22]. Abe et al. cloned LIF in zebra fish and indicated that human LIF is orthologous with zebra fish LIF [23]. Song et al. cloned leukemia inhibitory factor (LIF) and assayed its expression in the uterus during embryonic diapause and implantation in the mink (*Mustela vison*) [24]. By review of limited studies performed understand that production of rhLIF in bacteria makes inclusion body but we can decrease this ratio to the least according to optimization of culturing or utilization of tags such as thioredoxin which is added to recombinant protein to make it insoluble in bacteria cytoplasm to overcome the problem. Our sequence had His-tag for single step purification as it was used before for purifications in other studies too. The problem by tags

like thioredoxin is that separating of these tags from recombinant protein need special protease which costs highly and adds extra steps to purification procedure. RhLIF production in *E. coli* is cost-effective due to the low price of LB medium needed to culture the bacteria in contrast to eukaryotic hosts media and we can gain lots of recombinant protein [25, 26]. Human leukemia inhibitory factor has more suitable response in human and mouse stem cell culturing so achieving recombinant human type of this factor is better than cloning of other animals LIF such the works previously have been done, so we choose human LIF for this propose. In current study all optimizing steps applied to elevate recombinant gene expression to gain high pure rhLIF, Results indicated positive efforts. The only reason can cause reduction in function ability of this factor is glycosylation occurs in human, by the way it seems glycosylation is not necessary for biological activity in vivo nor in vitro, but may affects stability of LIF in vitro or in vivo [1, 3]. Current research experiences maybe useful for some future researches like cancer therapy products and etc. According to restricted access of patients to such products, focusing on such researches would be more important subject.

Acknowledgements

The authors hereby express their gratitude and thank to the Shahid Chamran University and Research Council of Jundishapur Medical University of Ahvaz for providing grant for this study. This paper was prepared from Master thesis No. 9010206 of Shahid Chamran University by Houman Kahroba.

Authors' Contributions

All authors had equal role in design, work, statistical analysis and manuscript writing.

Conflict of Interest

The authors declare no conflict of interest.

Funding/Support

Shahid Chamran University, Ahvaz, Iran. Jundishapur Medical University of Ahvaz, Iran.

References

- Dimitriadis E, Salamonsen LA, Menkhorst E. Leukemia inhibitory factor and human endometrial receptivity. *Indian J Physiol Pharmacol.* 2010; 54(5): 17-26.
- Auernhammoler CJ, Melmed S. Leukemia-inhibitory factor-neuroimmunomodulator of endocrine function. *Endocr Rev.* 2000; 21(3): 313-45.
- Gearing DP, Gough NM, King JA, et al. Molecular cloning and expression of cDNA encoding a murine myeloid leukaemia inhibitory factor (LIF). *EMBO J.* 1987; 6(13): 3995-4002.
- Ikeda K, Iwasaki Y, Tagaya N, et al. Neuro-protective effect of cholinergic differentiation factor/leukemia inhibitory factor on wobblers murine motor neuron disease. *Muscle Nerve.* 1995; 18(11): 1344-7.
- Fakher R, Saki G. Assessment of motility survival rate of astheno-spermic men's sperm cultured in media plus leukemia inhibitor factor. *Int J Pharmacol.* 2010; 6(3): 306-10.
- Iheema SS, Richards LJ, Murphy M and Bartlett PF. Leukaemia inhibitory factor rescues motoneurons from axotomy-induced cell death. *Neuroreport.* 1994; 5(8): 989-92.
- Gurek JB, Austin L, Cheema SS, et al. Up-regulation of leukemia inhibitory factor and interleukin-6 in transected sciatic nerve and muscle following denervation. *Neuromuscul Disord.* 1996; 6(2): 105-14.
- Chen JR, Cheng JG, Shatzer T, et al. Leukemia inhibitory factor can substitute for nidatory estrogen and is essential to inducing a receptive uterus for implantation but is not essential for subsequent embryogenesis. *Endocrinology.* 2000; 141(12): 4365-72.

9. Tjernlund A. [Leukemia inhibitory factor (LIF) and gp130 in early defence against HIV-1 infection] [dissertation]. Stockholm: Karolinska Institutet; 2006.
10. Metcalf D, Nicola NA, Gearing DP. Effects of injected leukemia inhibitory factor on hematopoietic and other tissues in mice. *Blood*. 1990;76(1): 50-6.
11. Mayer P, Geissler K, Ward M and Metcalf D. Recombinant human leukemia inhibitory factor induces acute phase proteins and raises the blood platelet counts in nonhuman primates. *Blood*. 1993; 81(12): 3226-33.
12. Hilton DJ. LIF: Lots of interesting functions. *Trends Biochem Sci*. 1992; 17(2): 72-6.
13. Mikolajczyk M, Skrzypczak J, Szymanowski K and Wirstlein P. The assessment of LIF in uterine flushing: A possible new diagnostic tool in states of impaired fertility. *Reprod Biol*. 2003; 3(3): 259-70.
14. Richter KS. The importance of growth factors for preimplantation embryo development and in-vitro culture. *Curr Opin Obstet Gynecol*. 2008; 20(3): 292-304.
15. Dimitriadis E, Menkhorst E, Salamonsen LA and Paiva P. Review: LIF and IL-11 trophoblast-endometrial interactions during the establishment of pregnancy. *Placenta*. 2010; 31 Suppl: S99-104.
16. Darabi P, Galehdari H, Khatami SR, et al. Codon optimization, cloning and expression of the human leukemia inhibitory factor (hLIF) in *E. coli*. *Iran J Biotechnol*. 2012; 11(1): 47-53.
17. Green MR, Sambrook J. *Molecular cloning a laboratory manual*. 4th ed. New York: Cold Spring Harbor Laboratory Press; 2012.
18. Imsoonthornruksa S, Noisa P, Parnpai R and Ketudat-Cairns M. A simple method for production and purification of soluble and biologically active recombinant human leukemia inhibitory factor (hLIF) fusion protein in *Escherichia coli*. *J Biotechnol*. 2011; 151(4): 295-302.
19. Gough NM, Gearing DP, King JA, et al. Molecular cloning and expression of the human homologue of the murine gene encoding myeloid leukemia-inhibitory factor. *Proc Natl Acad Sci U S A*. 1988; 85(8): 2623-7.
20. Horiuchi H, Tategaki A, Yamashita Y, et al. Chicken leukemia inhibitory factor maintains chicken embryonic stem cells in the undifferentiated state. *J Biol Chem*. 2004; 279(23): 24514-20.
21. Tomala M, Lavrentieva A, Moretti P, et al. Preparation of bioactive soluble human leukemia inhibitory factor from recombinant *Escherichia coli* using thioredoxin as fusion partner. *Protein Expr Purif*. 2010; 73(1): 51-7.
22. Cui S, Selwood L. cDNA cloning, characterization, expression and recombinant protein production of leukemia inhibitory factor (LIF) from the marsupial, the brushtail possum (*Trichosurus vulpecula*). *Gene*. 2000; 243(1-2): 167-78.
23. Abe T, Mikekado T, Haga S, et al. Identification, cDNA cloning, and mRNA localization of a zebrafish ortholog of leukemia inhibitory factor. *Comp Biochem Physiol B Biochem Mol Biol*. 2007; 147(1): 38-44.
24. Song JH, Houde A, Murphy BD. Cloning of leukemia inhibitory factor (LIF) and its expression in the uterus during embryonic diapause and implantation in the mink (*Mustela vison*). *Mol Reprod Dev*. 1998; 51(1): 13-21.
25. Quesenberry PJ, Morley A, Ryan M, et al. The effect of endotoxin on murine stem cells. *J Cell Physiol*. 1973; 82(2): 239-244.
26. Quesenberry P, Morley A, Stohlman F Jr, et al. Effect of endotoxin on granulopoiesis and colony-stimulating factor. *N Engl J Med*. 1972; 286(5): 227-32.

Please cite this article as: Kahroba H, Galehdari H, Shafeei M, Khatami SR, Khodadadi A. Expression optimizing and purification of recombinant human leukemia inhibitory factor (rhLIF) produced in *E. coli* BL21. *Zahedan J Res Med Sci*. 2015; 17(2): 47-51.